



Published by

Kikkoman Institute for International Food Culture

[FOOD CULTURE] No.28

Published: November 30, 2018 Publisher: Koutarou Yamashita

250 Noda, Noda-shi, Chiba-ken 278-8601 TEL: +81-4-7123-5215 FAX: +81-4-7123-5218

※The distribution and use of photographs, illustrations and articles contained in this publication without written consent are prohibited.



Kikkoman Institute for International Food Culture

The Kikkoman Institute for International Food Culture provides information on the food cultures of Japan and other countries through panel exhibitions and seminars with invited experts from various fields. Books and historical materials related to foods and food cultures in its collections are also open to the public. At the library, a digital data search system has been introduced to enable convenient access to these materials.



キッコーマン国際食文化研究センター
Kikkoman Institute for International Food Culture



Entrance



Reading corner



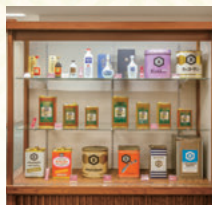
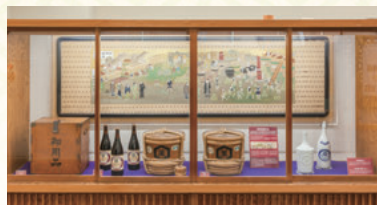
Library



Permanent exhibition



Themed exhibition



Various exhibitions

<http://www.kikkoman.co.jp/kiifc/>

Kikkoman Institute for International Food Culture

250 Noda, Noda-shi, Chiba-ken 278-8601, Japan TEL: +81-4-7123-5215 FAX: +81-4-7123-5218

Hours: 10:00 a.m.–12:00 a.m., 1:00 p.m.– 5:00 p.m., Monday through Friday

The institute is closed on holidays, including year-end and New Year's holidays, Golden Week and Obon.

*Call the institute for details.



Food culture seminar